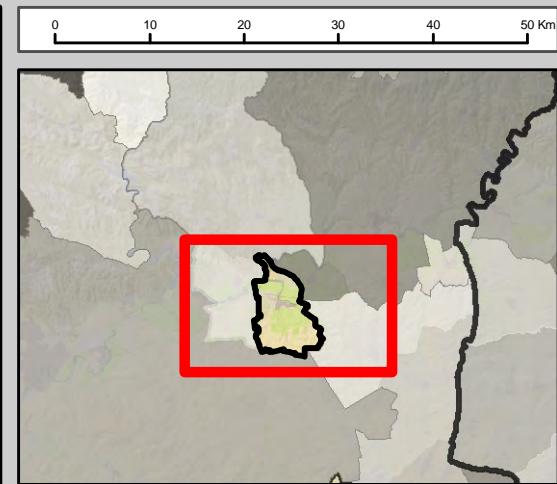
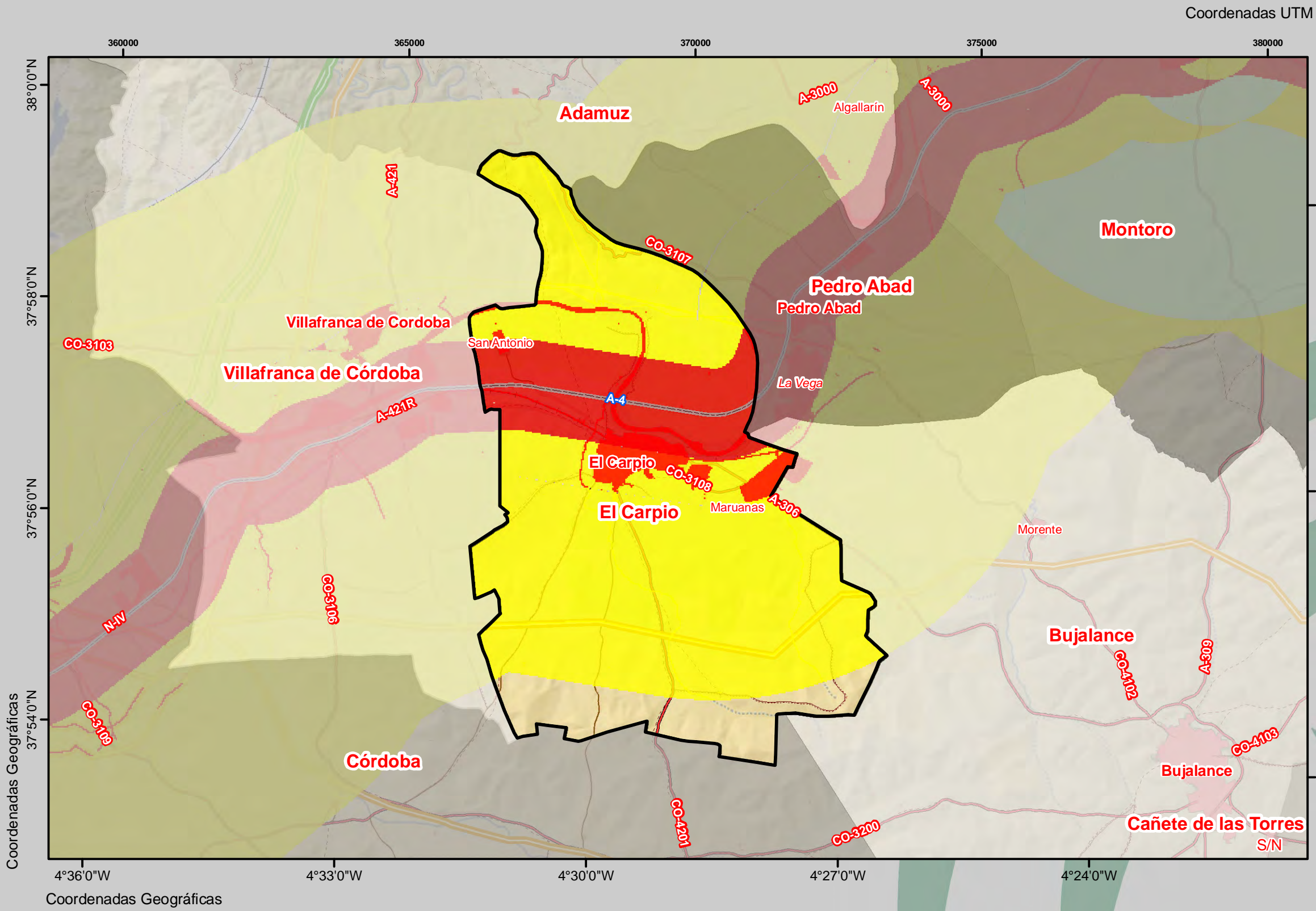










CARTOGRAFÍA DESCRIPTIVA DEL MUNICIPIO DE EL CARPIO



ELEMENTOS DESCRIPTIVOS

-  Gasoductos
-  Oleoductos
-  Núcleos de población

Riesgo Red Itinerante de Mercancías Peligras (RIMP)

- Carretera
-  RIMP
 -  Bajo
 -  Medio
 -  Alto
 -  Muy alto

Localizador

Leyenda

Plan de Emergencia Municipal de El Carpio

Transporte de Mercancías Peligras por carretera

Escala: 1:75,000 Plano: Nº 10.3

Proyección UTM HUSO 30N Sistema de Referencia Elipsoidal ED50

INFORMACIÓN BÁSICA APORTADA POR LA JUNTA DE ANDALUCÍA

